

Glass patch overpanel patch pivot

Knud Holscher collection

Product

31x52x164mm, f/glass, 10-12mm.

Tender text

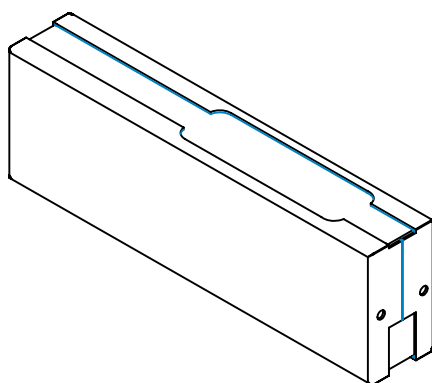
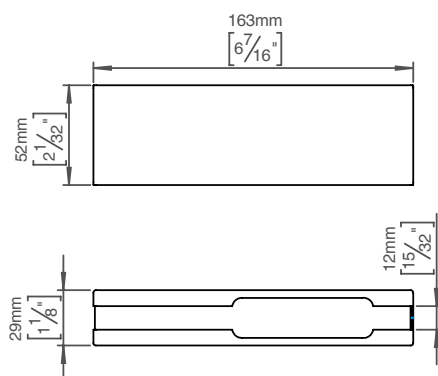
Knud Holscher collection, overpanel patch pivot, 31x52x164mm, f/glass 10-12mm. Manufactured in the highest quality marine grade, AISI 316 stainless steel, protecting against high levels of corrosion. 20-year warranty.

Product specification

Dimensions: 164x30,5x52mm

Material: stainless steel AISI 316

Surface finish: satin grain 320, crafted by hand

[20-year warranty \(5 years for coated items\)](#)

Available finishes

Solid metal



Satin steel

Polished steel

PVD



Charcoal

Gunmetal

Copper

Brass

Powder coated



White

Black

Pale telegrey

Grey



Super matt black

Super matt white

Spare parts/ accessories

D 7158 - Cover for overpanel body RH

D 7159 - Cover for overpanel body LH

D 7147 - Overpanel patch body

Mounting

<https://dline.com/mounting-instructions/>

Product care

d line products are produced in the highest quality marine grade AISI 316 stainless steel. To sustain the unique d line finish please follow the below instructions:

- Wash down the surfaces using soapy water or mild detergent
- Always thoroughly rinse off with clean water

- To complete the cleaning procedure dry/polish the surface with a soft dry cloth

Please do not use scouring powder, steel wool, chloride based detergents or other aggressive cleaning products as these may damage the surface.

If spots or corrosion appear on the surface it is not due to the stainless steel quality, but to impurities in the environment, aggressive conditions or improper or insufficient cleaning.