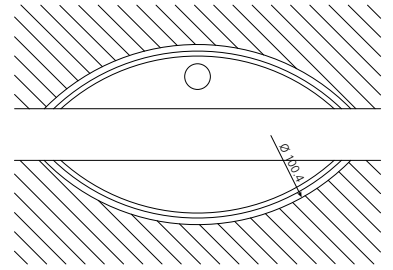
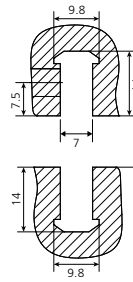
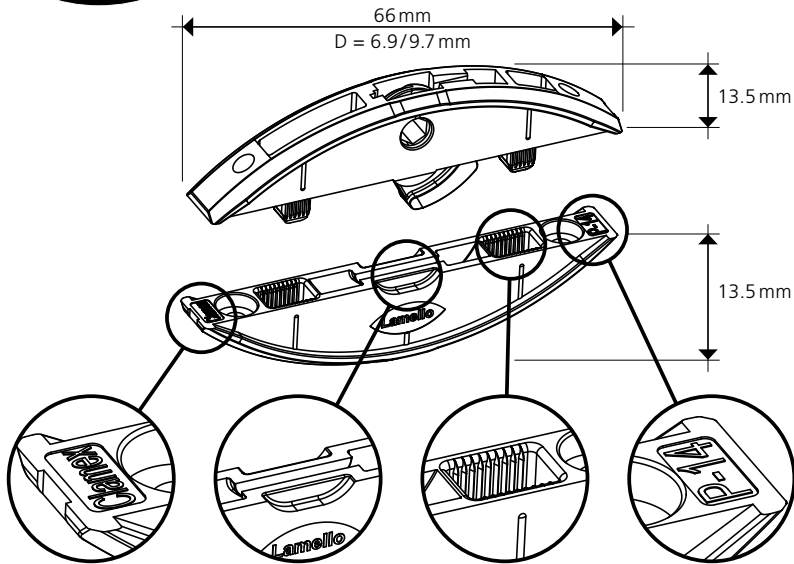


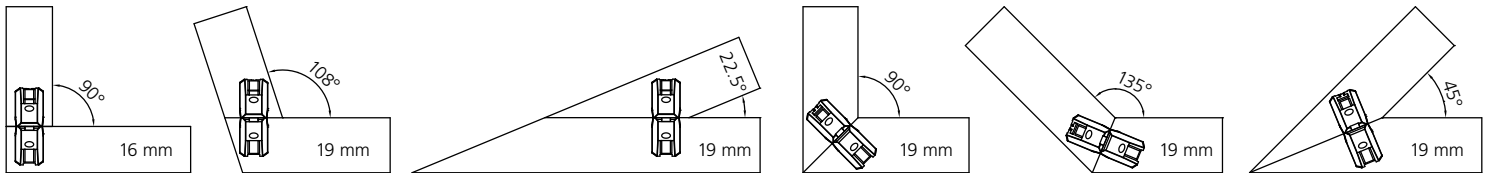
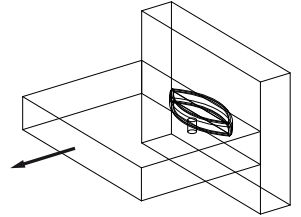
Clamex P-14

Pat. pend.

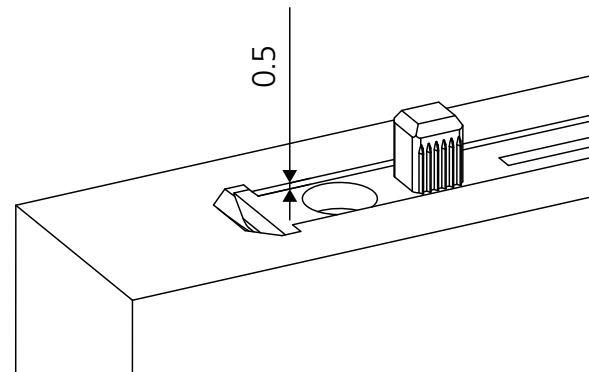
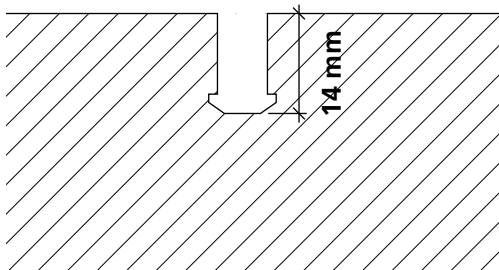


Zugbruchfestigkeit / Tensile strength:

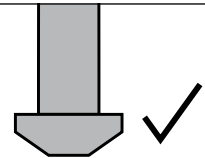
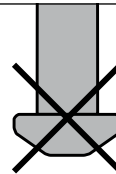
- Spanplatte / particle board:
~ 800 N = 80 kg
- Buche massiv / beech massive:
~ 1000 N = 100 kg
- MDF:
~ 900 N = 90 kg



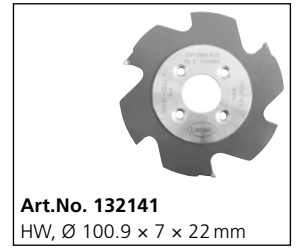
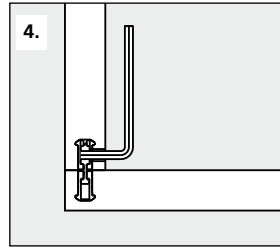
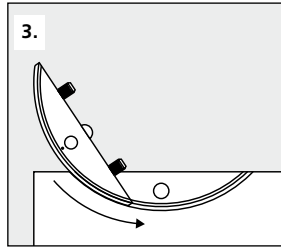
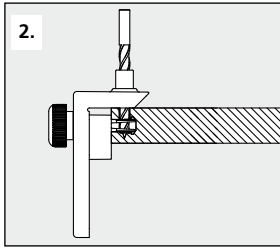
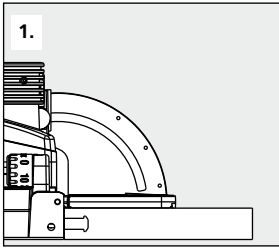
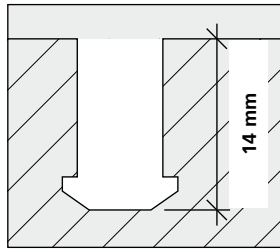
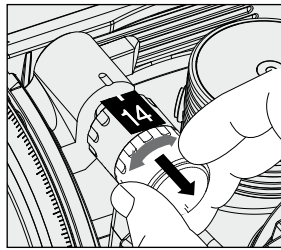
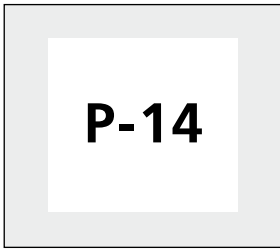
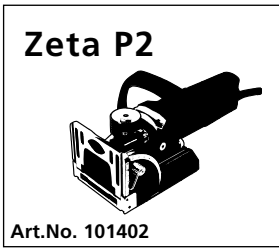
P-14



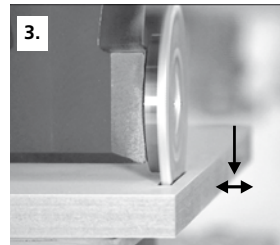
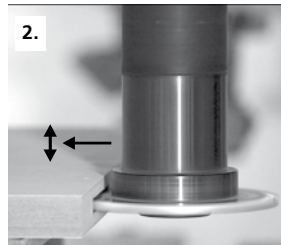
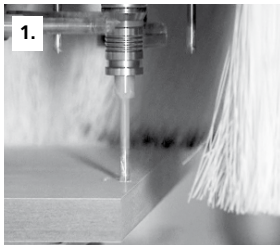
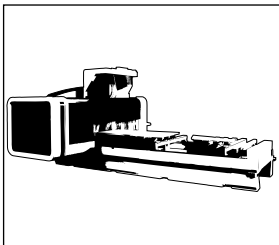
Scharfe Fräser verwenden
Use sharp cutters



Tenso P-14		Clamex P Medius 14/10		Clamex P-14		Bisco P-14		Clamex P-10		Bisco P-10	
Paar / Pair / Paire / Paio	Art. No.	Paar / Pair / Paire / Paio	Art. No.	Paar / Pair / Paire / Paio	Art. No.	Stück / piece / pièce / pezzi	Art. No.	Paar / Pair / Paire / Paio	Art. No.	Stück / piece / pièce / pezzi	Art. No.
80	145410	80	145370	80	145334	80	145301	80	145372	80	145304
300	145420	300	145371	300	145346	300	145302	300	145373	300	145305
1000	145431			1000	145356	1000	145303	1000	145374		



CNC | Partner network: www.lamello.com



Art. No. 132142
DP, 100.4 × 7 × 30 mm
4 / 6.6 / DTK 48 mm
* Passend zu allen aufgeführten Fräsdornen
Suitable for all cutter arbors listed

Art. No. 132143
DP, 100.4 × 7 × 40 mm
4 / 5.5 / DTK 52 mm

Art. No. 132144
DP, 100.4 × 7 × 16 mm
4 / 5.5 / DTK 28 mm

* **Art. No. 132150**
20 × 50, L = 102 mm

* **Art. No. 132151**
25 × 60, L = 102 mm

* **Art. No. 132152**
16 × 50, L = 85 mm

* **Art. No. 132153**
16 × 55, L = 68 mm

* **Art. No. 132154**
16 × 50, L = 85 mm, mit Spannfläche (2°-schräg) / with clamping surface (2°- angle)

* **Art. No. 132155**
20 × 50, L = 85 mm, mit Spannfläche (2°-schräg) / with clamping surface (2°- angle)

Abdeckkappen / Cover caps
100 Stück / 100 pieces

90°

RAL	Art. No.
9010	335280
9011	335281
1014	335282
1011	335283
8007	335284
9002	335285
7035	335286
7040	335287
7031	335288

45°

RAL	Art. No.
9010	335380
9011	335381
1014	335382
1011	335383
8017	335384
7022	335388

