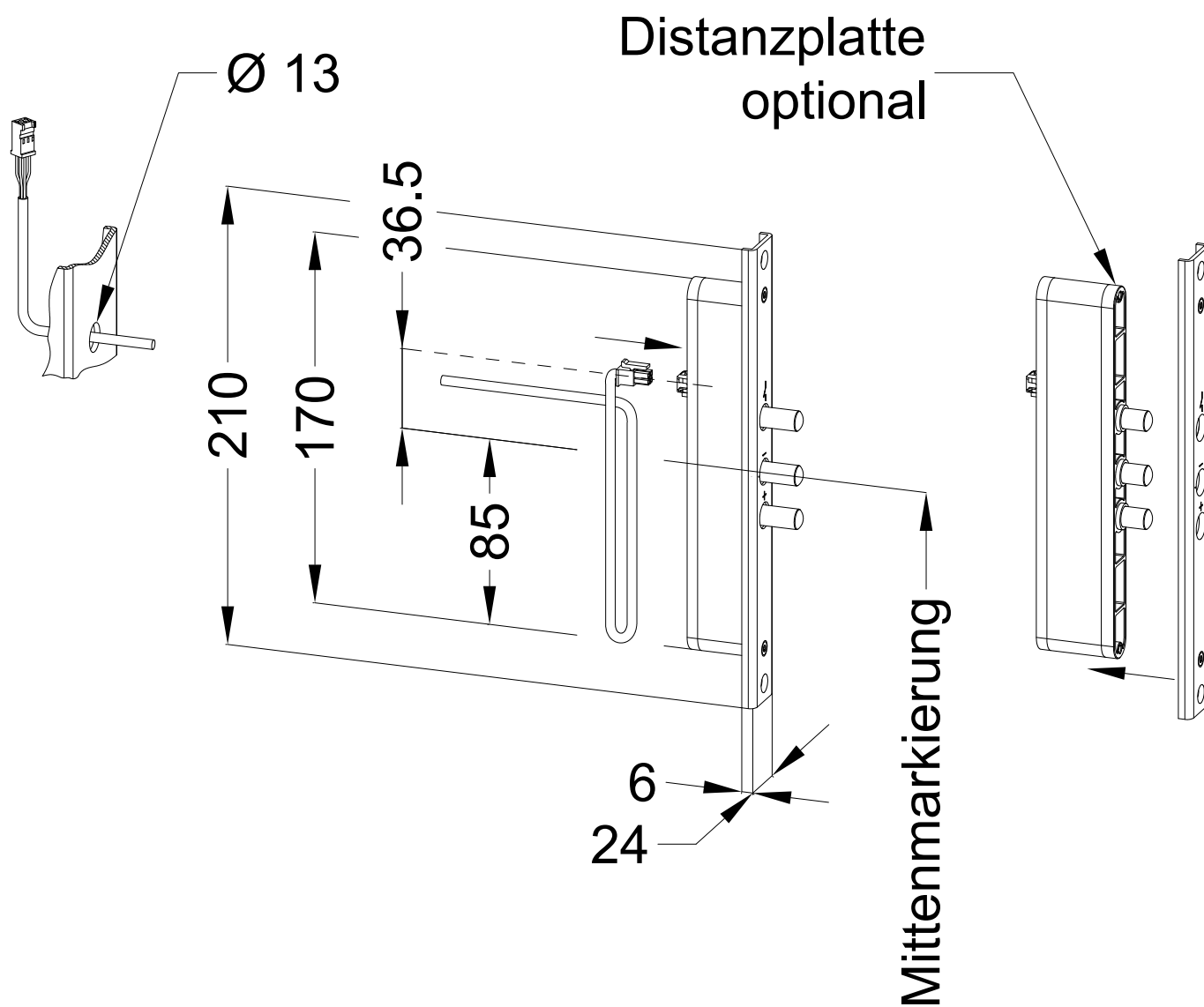
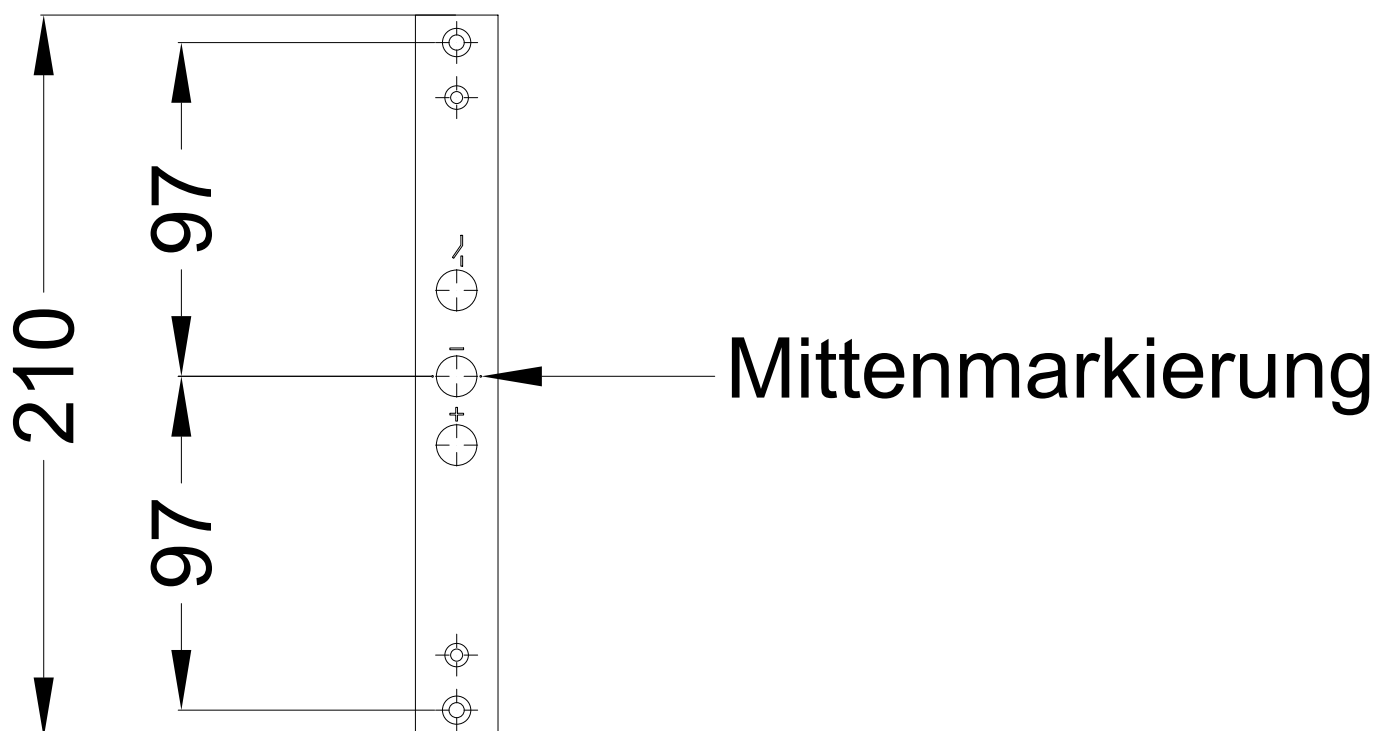
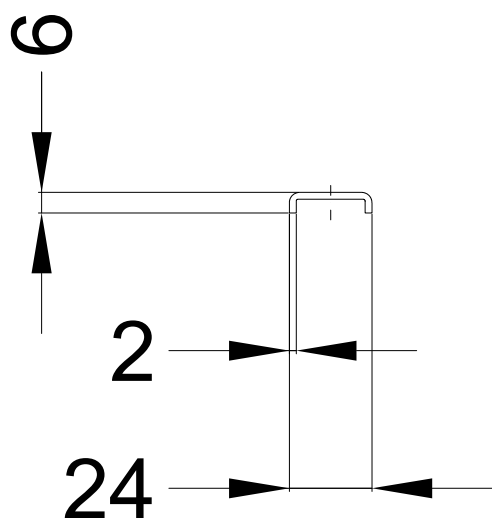


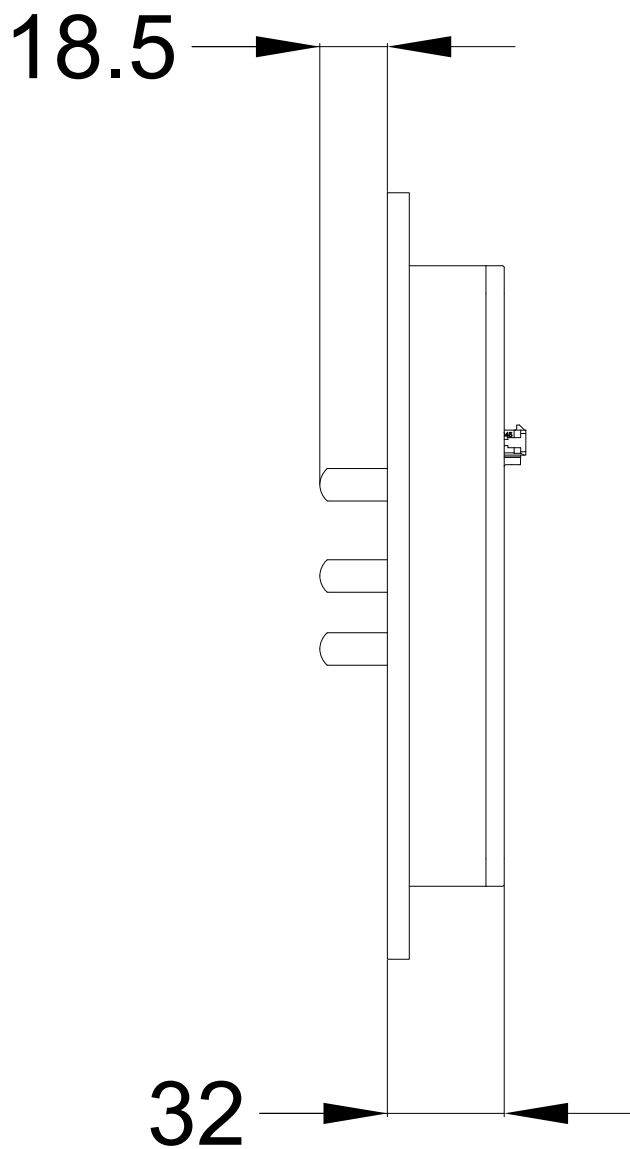
Perspektive

STV-STÖßELKONTAKT FLÜGELSEITE mit/ohne Energiespeicher

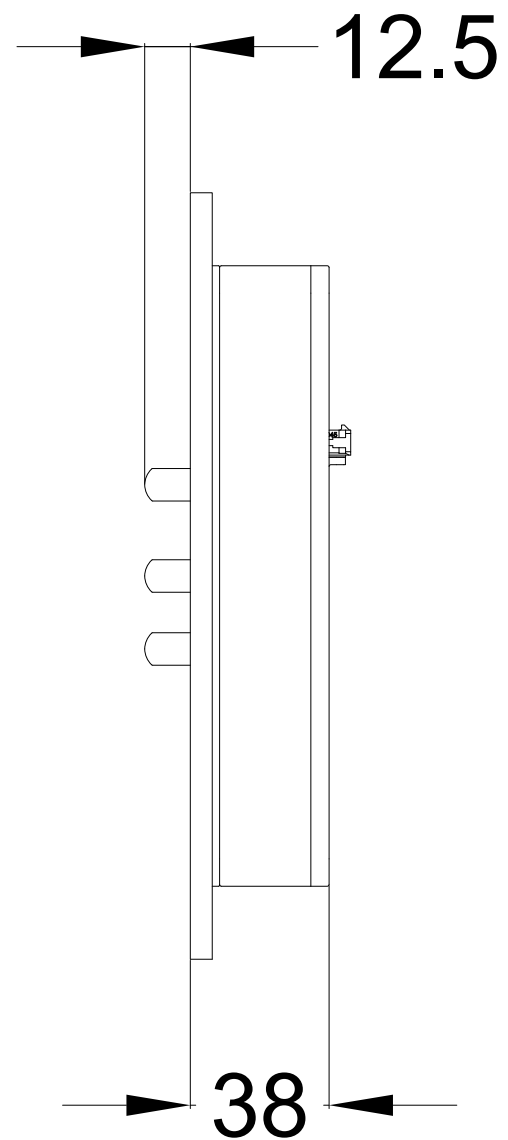
Stulpe U24x6





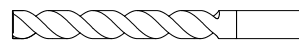


ohne
Distanzplatte

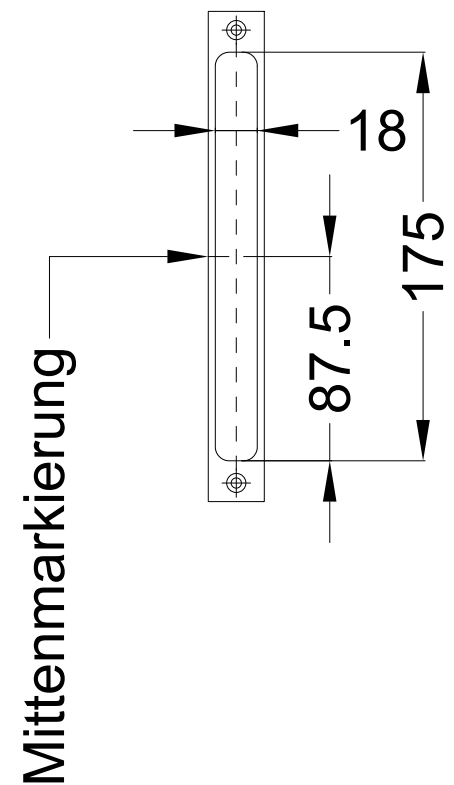
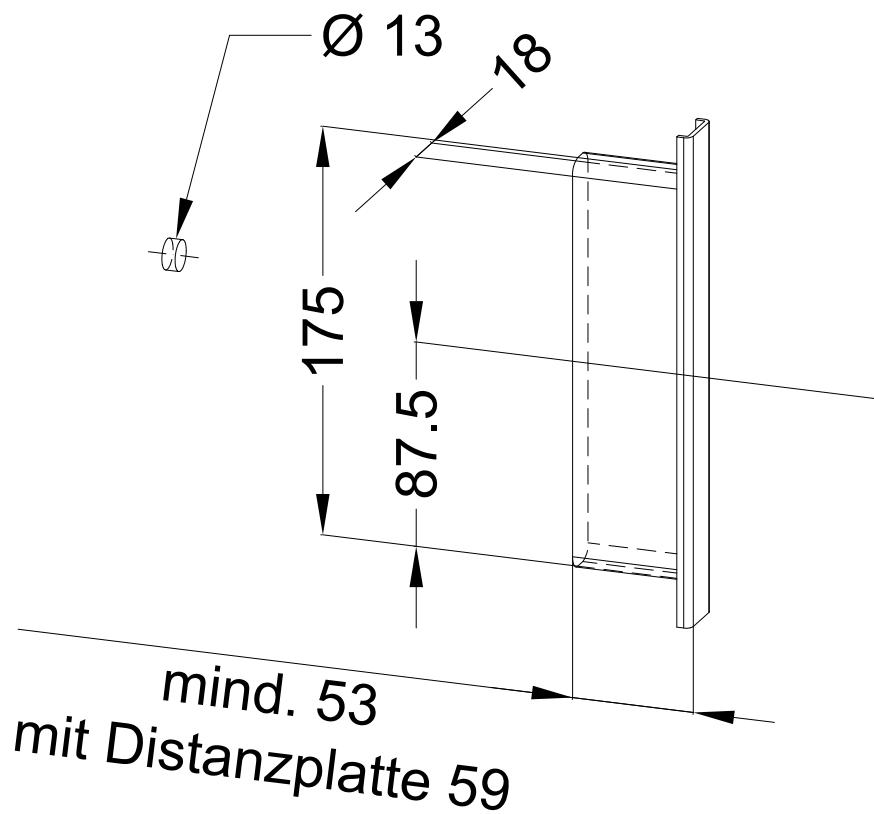


mit
Distanzplatte

Empfohlene Fräsung



Ø 12

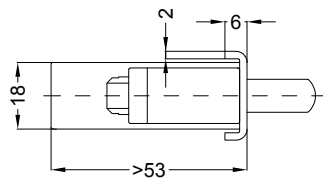
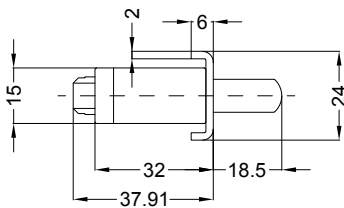


Einbausituationen der Bauteile mit Fräsmaßen
STV-STÖßELKONTAKT FLÜGELSEITE mit/ohne Energiespeicher
Stulpe U24x6

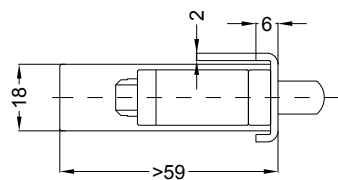
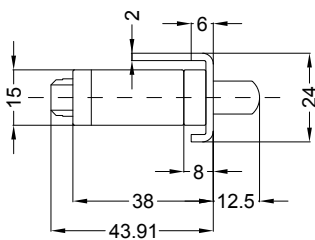


Allgemeine Vermaung

Frsmae

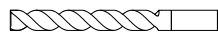


Situation Stelkontakt Flgelteil
mit Stulpe U24x6



Situation Stelkontakt Flgelteil
mit Stulpe U24x6 + Distanzplatte

Empfohlene Fräsung



Ø 12

